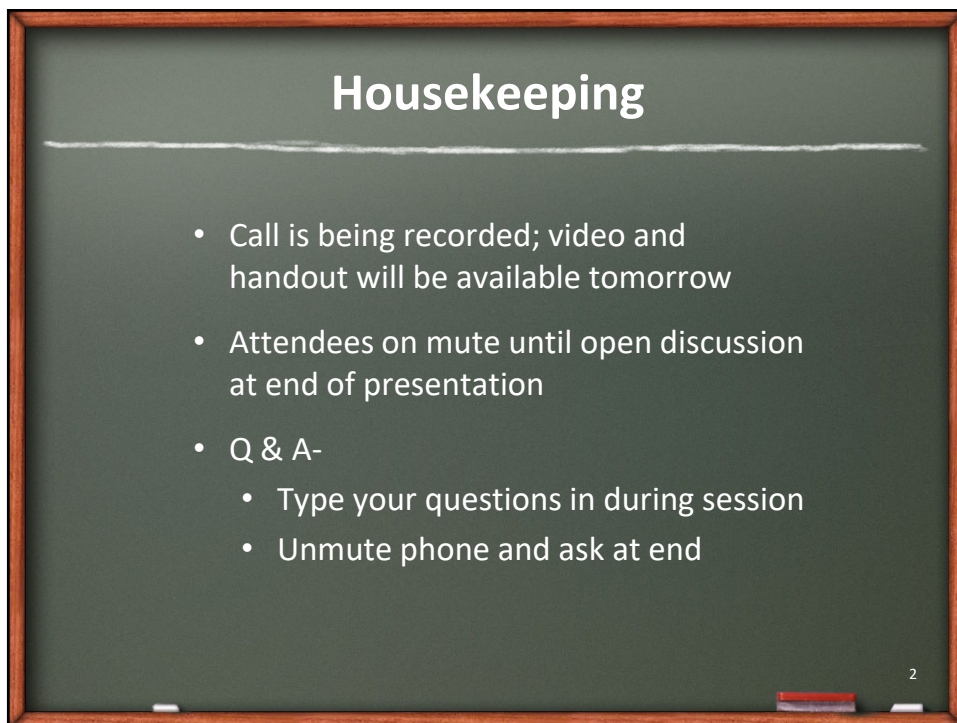


1



2

## Today's Topics

1. Developments since last week
2. Congressional Activity
3. Remote Technology
4. Clinician Update
5. Business Assistance
6. OIG PMD Repair Audit
7. Q & A
8. Next webinar- Thursday 4/30 at 4:00 PM ET

3

3

## Previous 3 CRT Webinars

- Presented April 2, April 9, April 16
- Links to videos and handouts at [www.ncart.us](http://www.ncart.us) and [www.nrrts.org](http://www.nrrts.org)

4

4

## Contact Information

**Don Clayback**, NCART, Executive Director  
[dclayback@ncart.us](mailto:dclayback@ncart.us)

**Weesie Walker**, NRRTS, Executive Director  
[wwalker@nrrts.org](mailto:wwalker@nrrts.org)

**Dan Fedor**, U.S. Rehab, Director of Reimb. & Education  
[dan.fedor@vgm.com](mailto:dan.fedor@vgm.com)

**Cathy Carver**, Clinician Task Force, Executive Director  
[cathyhcarver@gmail.com](mailto:cathyhcarver@gmail.com)

5

5

## Contacts (cont'd)

**Rita Stanley**, Sunrise Medical, VP of Gov't Relations  
[rita.stanley@sunmed.com](mailto:rita.stanley@sunmed.com)

**Seth Johnson**, Quantum Rehab, SVP of Gov't Affairs  
[sjohnson@pridemobility.com](mailto:sjohnson@pridemobility.com)

**Jim Stephenson**, Permobil, Reimb. & Coding Manager  
[jim.stephenson@permobil.com](mailto:jim.stephenson@permobil.com)

**Mickae Lee**, NCART, Director of Advocacy & Comm.  
[mlee@ncart.us](mailto:mlee@ncart.us)

6

6

## Recent Developments

- Continued outreach to CMS, MACs, and state agencies
- Continued collaboration with advocacy partners: VGM/US Rehab, AA Homecare, State Associations
- DME MAC COVID-19 webinars
- New CMS Medicaid Telehealth Toolkit

7

7

## Outstanding Issues

- Medicare documentation requirements under relaxed COVID-19 polices
- Add of PTs/OTs as Medicare telehealth practitioners; add CPT Code 97542 for "Wheelchair Management"
- Additional Medicare guidance on required CRT evaluations/assessments
- State adoption of telehealth for CRT when appropriate

8

8

## CMS State Telehealth Policy

“While not all patient interactions can be delivered through telehealth, our clinicians on the frontlines need every tool in their arsenal to fight this invisible enemy,” said CMS Administrator Seema Verma. “I’m urging states to use this toolkit to make sure our Medicaid patients, particularly our children, can continue to receive needed care from the safety of their homes.” --- April 23, 2020

<https://www.medicaid.gov/medicaid/benefits/downloads/medicaid-chip-telehealth-toolkit.pdf>

9

9

## Congressional Activity

HR 266 – Paycheck Protection Program & Health Care Enhancement Act

### Small Business Relief

- Adds \$310 billion to PPP
- Adds \$60 billion to EIDL program

### Healthcare

- Adds \$75 billion to Healthcare Provider Relief fund
- Includes \$25 billion for COVID-19 testing

10

10

## Remote Technology Terms

- Medicare Telehealth
  - Multimedia communications equipment that includes, at a minimum, audio and video equipment; two-way, real-time interactive communication between the patient and physician/ practitioner
- Virtual Check-Ins & E-Visits
  - Communication Technology-Based Services (CTBS)- are not considered Medicare telehealth services
- Remote Supplier (ATP) Involvement

11

11

## PT/OT Telehealth

- Payer specific regulations – Medicare, Medicaid, commercial insurers: (a) which clinicians can bill (b) what CPT codes billable
- Medicare has approved codes but has NOT YET approved PTs and OTs to use them
- Some Medicaid and commercial insurers are allowing.....list is growing
- NCART CRT Telehealth Advisory (see [www.ncart.us](http://www.ncart.us))

12

12

## What We Know

- Physician face-to-face for PMDs remains in place, but can be completed via telehealth
- In-person/face-to-face or implied in-person evaluations and assessments are not required- COVID-19 duration
- Current CMS regs: “involvement of the ATP in the evaluation of the patient via a live video feed is acceptable for beneficiaries who reside in remote locations ....”
- Awaiting additional CMS/MAC information

13

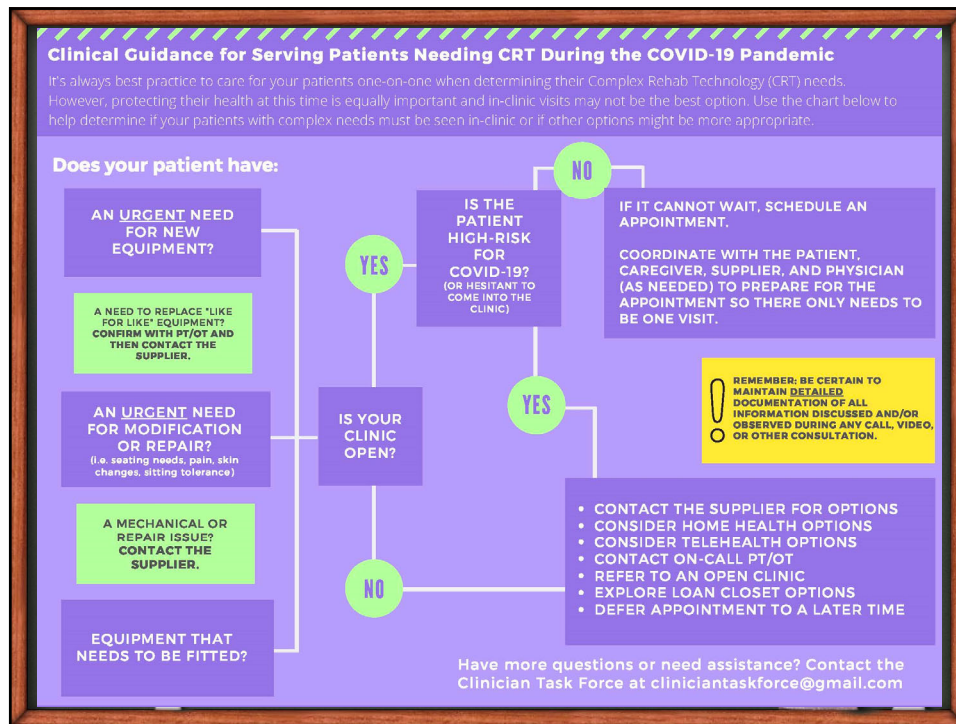
13

## Clinician Perspective

**Cathy Carver, PT, ATP/SMS**  
**Executive Director, Clinician Task Force**  
Wheelchair and Seating Clinic  
University of Alabama Hospital  
[cathyhcarver@gmail.com](mailto:cathyhcarver@gmail.com)

14

14



15

## The CRT Team Under New Stresses

- The Clinician challenged with new protocols and managing evaluations and deliveries
- The Supplier challenged with new protocols and keeping orders moving
- The Manufacturer challenged with production and delivery delays
- The Patient- Should I get my eval done now? Should I wait? Should I let a delivery happen in my home?

***Balancing Risk vs. Resources vs. Reasonableness***

16

16



**Case Examples from the Field**

---

**Erin Michael, DPT, ATP/SMS**  
CTF Executive Board  
Kennedy Kreiger Institute  
Baltimore, MD

**Faith Savage, PT, ATP**  
CTF Member  
The Boston Home  
Natick, MA

17

17

**Provider Relief Fund Payments**

---

- Payments sent/deposited automatically – no application or request required (\$30 billion of \$100 billion fund)
- These are payments, not loans, to healthcare providers, and will not need to be repaid
- Providers who are struggling to keep their doors open due to healthy patients delaying care and cancelled elective services

18

18

## Paycheck Protection Program (PPP)

- The House is expected to hold an in-person vote today. The President is expected to sign the bill by no later than Friday morning, depending on when the House passes the bill
- Will provide \$310 billion for the depleted Paycheck Protection Program (PPP), Specifics: \$310 billion unrestricted for PPP \$60 billion in PPP set aside for smaller institutions (banks and credit unions)

19

19

## Accelerated/Advance Payments Expansion

- An accelerated/advance payment is a payment intended to provide necessary funds when there is a disruption in claims submission and/or claims processing
- **Response time and issue payments within seven calendar days of receiving the request**
- COVID-19 pandemic, CMS has extended the repayment of these accelerated/advance payments to begin **120 days** after the date of issuance of the payment
- Total amount of advance payment must be repaid within 210 days from issuance of the payment

20

20

## Other Helpful Websites

- <https://www.cms.gov/outreach-education/partner-resources/coronavirus-covid-19-partner-toolkit>
- <https://www.coronavirus.gov>
- <https://www.aahomecare.org/covid-19-resources>
- <https://www.vgm.com/coronavirus/>
- [www.hmenews.com/coronavirusoutbreak](http://www.hmenews.com/coronavirusoutbreak)
- <https://nrts.org/downloads/>

21

21

## OIG PMD Repair Audit

- Some suppliers have gotten a request to produce claim information and documentation
- We are sending a formal request asking for a delay until Public Health Emergency has ended

22

22

## Sign Up For Email Updates

- Visit [www.access2crt.org](http://www.access2crt.org) – CRT focused website
- Sign up to receive timely CRT advocacy related updates, including COVID-19 information

23

23

## Next Steps

- Next CRT COVID-19 call will be Thursday April 30 at 4:00 PM ET
- Email state issues/updates to [mlee@ncart.us](mailto:mlee@ncart.us)
- Thanks for your commitment!

**[Follow up to dclayback@ncart.us](mailto:dclayback@ncart.us)**

24

24



25